



# TURBOSOL<sup>®</sup>

PUMPING TECHNOLOGY FOR THE CONCRETE INDUSTRY

**TURBOSOL**  
over 60 years  
of experience  
and reliability

# TB 140C

## S-VALVE PUMP



TB 140C: cutting edge technology, the best performance in the toughest jobsites.

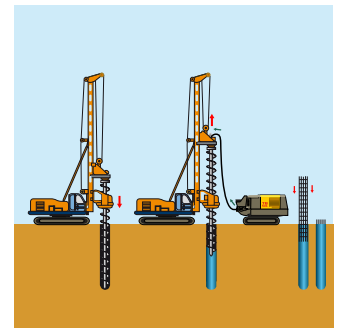
[www.turbosol.com](http://www.turbosol.com)

# TB 140C

## TECHNICAL DATA

Liquid cooled diesel engine	Deutz - TCD 6.1 L6 - 180 kW - 241 HP (Stage IV - Ready V) @ 2300
Infinitely adjustable output (max)*	140 m <sup>3</sup> /h
Max. aggregate size	40 mm
Max. working pressure	80 bar
Pumping cylinders	Ø 230 mm stroke of 2000 mm
Max. strokes	28
Drive cylinder diameter	140/90 mm
Delivery manifold	Ø 180 mm
Hopper capacity	550 l
Water tank capacity	700 l
Diesel tank	200 l
Filling height	156 cm
Chassis	steel crawler
Size (L x W x H)	645X240X275 cm
Weight	10.500 kg

\* The data indicated are theoretical and depend on the quality and consistency of the materials to be used, wear and tear of the pump and the diameter of the hoses. The performance in distance and height cannot be reached simultaneously.



## Characteristics

TB 140C is the new on crawler concrete pump with S-valve and variable output designed for filling bored piles and special civil works.

State of the art hydraulic system, solid structure, brand new components setup, reliable controls ensure high level performance with all sort of concrete and low operating costs.

## Applications

- Bored piles casting
- Pumping up to 40 mm of concrete
- Pumping grouts
- Land reinforcement
- Micro-piles, pressurized injection of mortars
- Compaction grouting

## Technical comfort

- The practical doors on the canopy and the new construction concept make maintenance and control operations quick and easy.
- Discharge door hydraulically operated for fast cleaning operations.
- Components generously dimensioned.
- Large water tank integrated under cover.
- New internal layout concept.
- Compact design.
- New hopper-valve-agitator design ideal even for harsh concrete.
- Remote control for pump and crawler.
- Optical and acoustic warning device.

## Scope of delivery

- 6-cylinder liquid cooled diesel engine
- Hopper assembly with S-valve and agitator
- Concrete grill with vibrator
- Automatic lubrication system
- Outlet collector Ø 180 mm with Victaulic couplings
- Hydraulic discharge door
- Safety horn
- Steel crawler chassis
- Hydraulic circuit with optimized exchange sequence
- Electromechanical control board
- Bosch Rexroth variable displacement pump
- Steel bend at 90° Ø 150 and reduction cone from Ø 150 to Ø 125
- Radio remote control
- 2 washing sponges
- Manual grease pump
- Accessory box

## Optionals

- Water pump 40 l/m' - 20 bar
- Various dimensions hoses Ø 150, Ø 125, Ø 100, Ø 75, and related accessories
- Hydraulically controlled air compressor, twin-cylinder, capacity 800 l/min with 50 l tank
- Rubber pads for crawler

# TURBOSOL

PUMPING TECHNOLOGY FOR THE CONCRETE INDUSTRY

TURBOSOL PRODUZIONE S.r.l.

Via Alessandro Volta, 1 - 31030 Pero di Breda di Piave (Treviso) - Italia

Tel. +39 0422 90251 - Fax +39 0422 904408 - E-mail: [info@turbosol.it](mailto:info@turbosol.it) - [www.turbosol.com](http://www.turbosol.com)

Standard equipment and optionals could vary due to specific market and legal requirements. The data in this brochure are purely indicative. Turbosol Produzione S.r.l. could make alterations to the models described in this brochure at any time for technical and commercial reasons.

