



TURBOSOL[®]

PUMPING TECHNOLOGY FOR THE CONCRETE INDUSTRY

TURBOSOL
over 60 years
of experience
and reliability

TB 50

S-VALVE PUMP



TB 50: cutting edge technology, new compact design for best performance in the toughest jobsites.

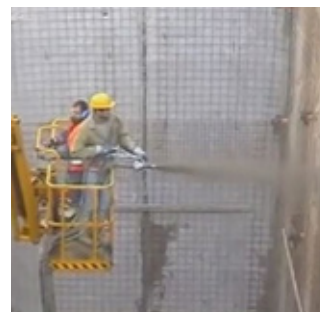
www.turbosol.com

TB 50

TECHNICAL DATA

Liquid cooled diesel engine	Kubota - V3307 CRTEGB turbo 4 cyl. - 55 kW - 74 HP (Stage V - III A) @ 2600
Infinitely adjustable output*	from 4 to 50 m ³ /h
Max. aggregate size	35 mm
Max. working pressure	80 bar
Pumping cylinders	Ø 200 mm stroke of 1000 mm
Max. strokes	27/min
Drive cylinder diameter	100/56 mm
Delivery manifold	Ø 150 mm
Hopper capacity	500 l
Delivery distance*	200 m
Delivery height*	100 m
Filling height	128 cm
Chassis	Manual draw-bar - fixed axle and pneumatic wheels
Size (L x W x H)	454X210X205 cm
Weight (draw-bar)	3220 kg

* The data indicated are theoretical and depend on the quality and consistency of the materials to be used, wear and tear of the pump and the diameter of the hoses. The performance in distance and height cannot be reached simultaneously.



Characteristics

TB 50 is the new stationary concrete pump with S-valve and variable output designed for concrete works.

State of the art hydraulic system, solid structure, brand new components setup, reliable controls ensure high level performance with all sort of concrete and low operating costs.

Applications

- Pumping up to 35 mm of concrete
- Grouts
- Self-levelling floor screeds
- Land reinforcement
- Micro-piles, pressurized injection of mortars and slurries
- Compaction grouting
- Shotcrete works

Technical comfort

- The practical doors on the canopy and the new construction concept make maintenance and control operations quick and easy.
- Tubular chassis including water, oil and diesel tanks.
- Central single lifting eye.
- Discharge door hydraulically operated for fast cleaning operations.
- Components generously dimensioned.
- Fully hydraulic controls.
- New internal setup concept.
- Compact design.
- New hopper-valve-agitator design ideal even for harsh concrete.

Scope of delivery

- 4-cylinder liquid cooled diesel engine
- Hopper assembly with S-valve and agitator
- Concrete grill with vibrator
- Centralized lubrication system
- Outlet collector Ø 150 mm with Victaulic couplings
- Hydraulic discharge door
- 4 manual stabilizers
- Safety horn
- Hydraulic circuit with optimized exchange sequence
- Electromechanical control board
- Bosch Rexroth variable displacement pump
- Lifting eye
- Steel bend at 90° Ø 150 and reduction cone from Ø 150 to Ø 125
- 30 m remote control
- Towbar
- 2 washing sponges
- Manual grease pump
- Accessory box

Optionals

- Water pump 40 l/m' - 20 bar
- 3-function radio remote control
- Various dimensions hoses Ø 125, Ø 100, Ø 75, Ø 65, Ø 50 and related accessories

TURBOSOL

PUMPING TECHNOLOGY FOR THE CONCRETE INDUSTRY

TURBOSOL PRODUZIONE S.r.l.

Via Alessandro Volta, 1 - 31030 Pero di Breda di Piave (Treviso) - Italia

Tel. +39 0422 90251 - Fax +39 0422 904408 - E-mail: info@turbosol.it - www.turbosol.com

Standard equipment and optionals could vary due to specific market and legal requirements. The data in this brochure are purely indicative. Turbosol Produzione S.r.l. could make alterations to the models described in this brochure at any time for technical and commercial reasons.

